



WASHINGTON COUNTY
OREGON

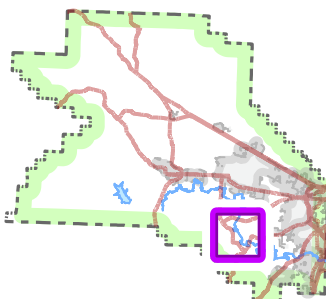
Dept. of Land Use & Transportation
Capital Project Services

**SW Farmington Road /
SW River Road Intersection**

For more information contact:
Capital Project Services
Main: 503-846-7800
Fax: 503-846-7810
lutproj@co.washington.or.us
www.wc-roads.com

KLF | August 05, 2021
Not to Scale

DISCLAIMER: This product is for informational purposes and may not have been prepared for, or be suitable for legal, engineering or surveying purposes. Users of this information should review or consult the primary data and information sources to ascertain the usability of the information.



- Road Closure
- Detour Route
- Project Location
- Highway
- Major Road
- Minor Street
- Private Street
- Rapid Transit (MAX)
- Railroads
- Rivers & Lakes
- Streams
- Cities
- Urban Growth Bdy.
- County Boundary